

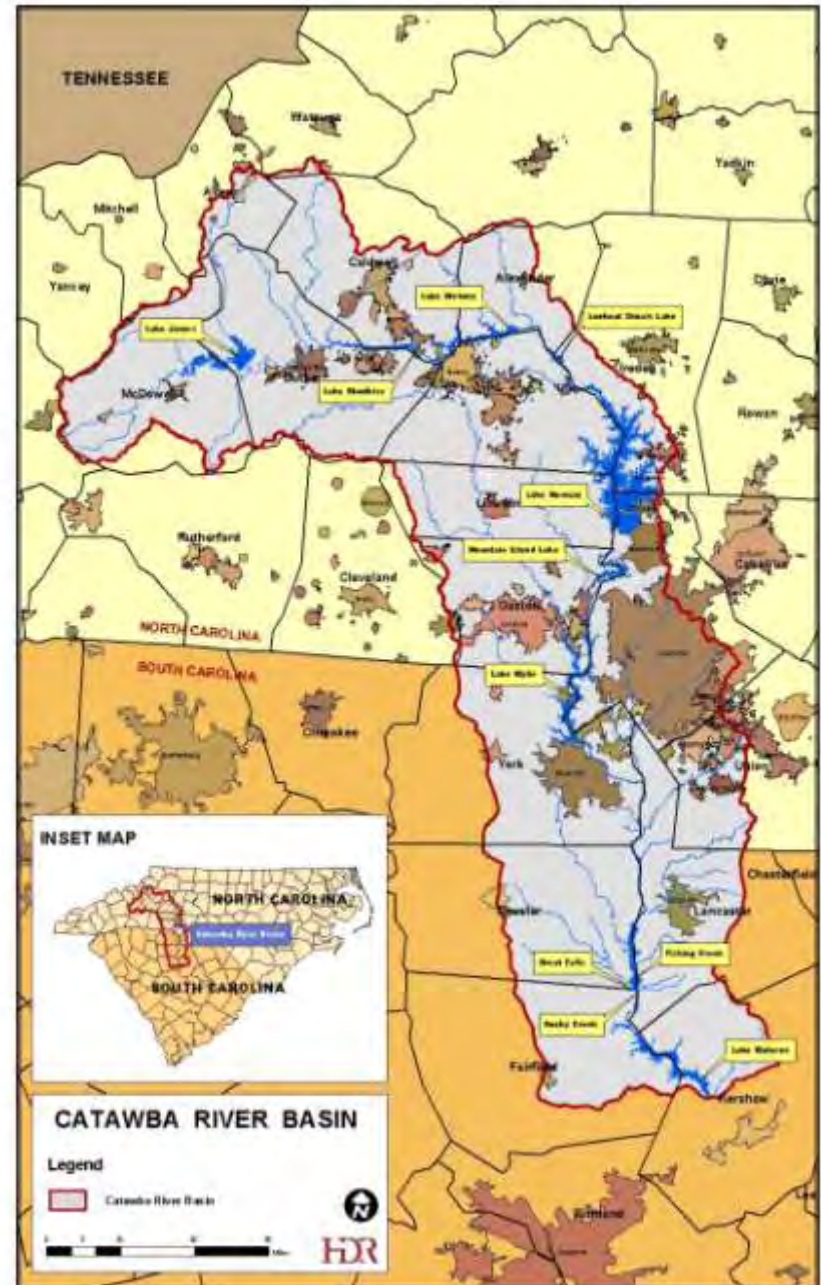


May 6, 2010

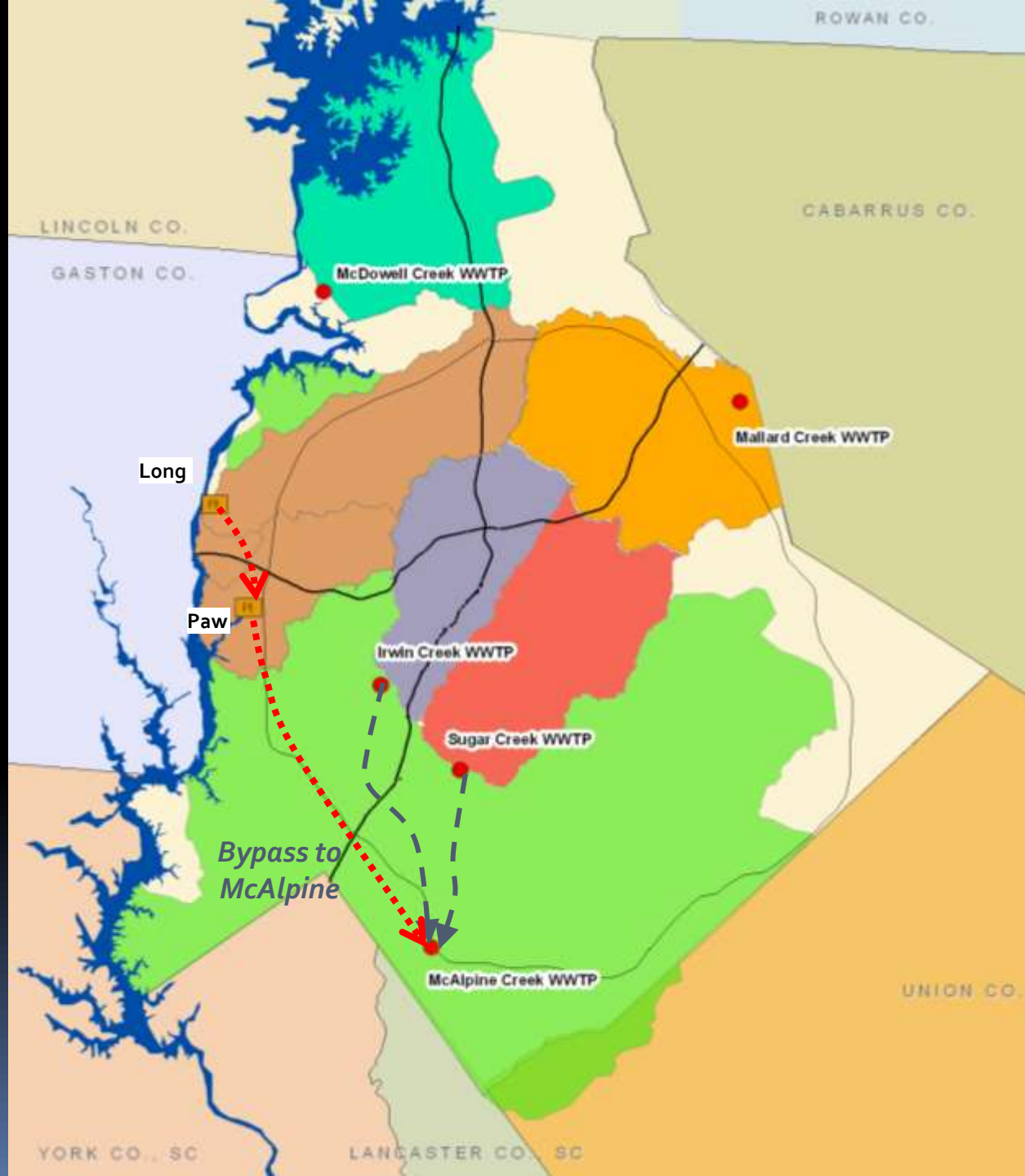
LESSONS LEARNED FROM A LEGACY TMDL

The Catawba River

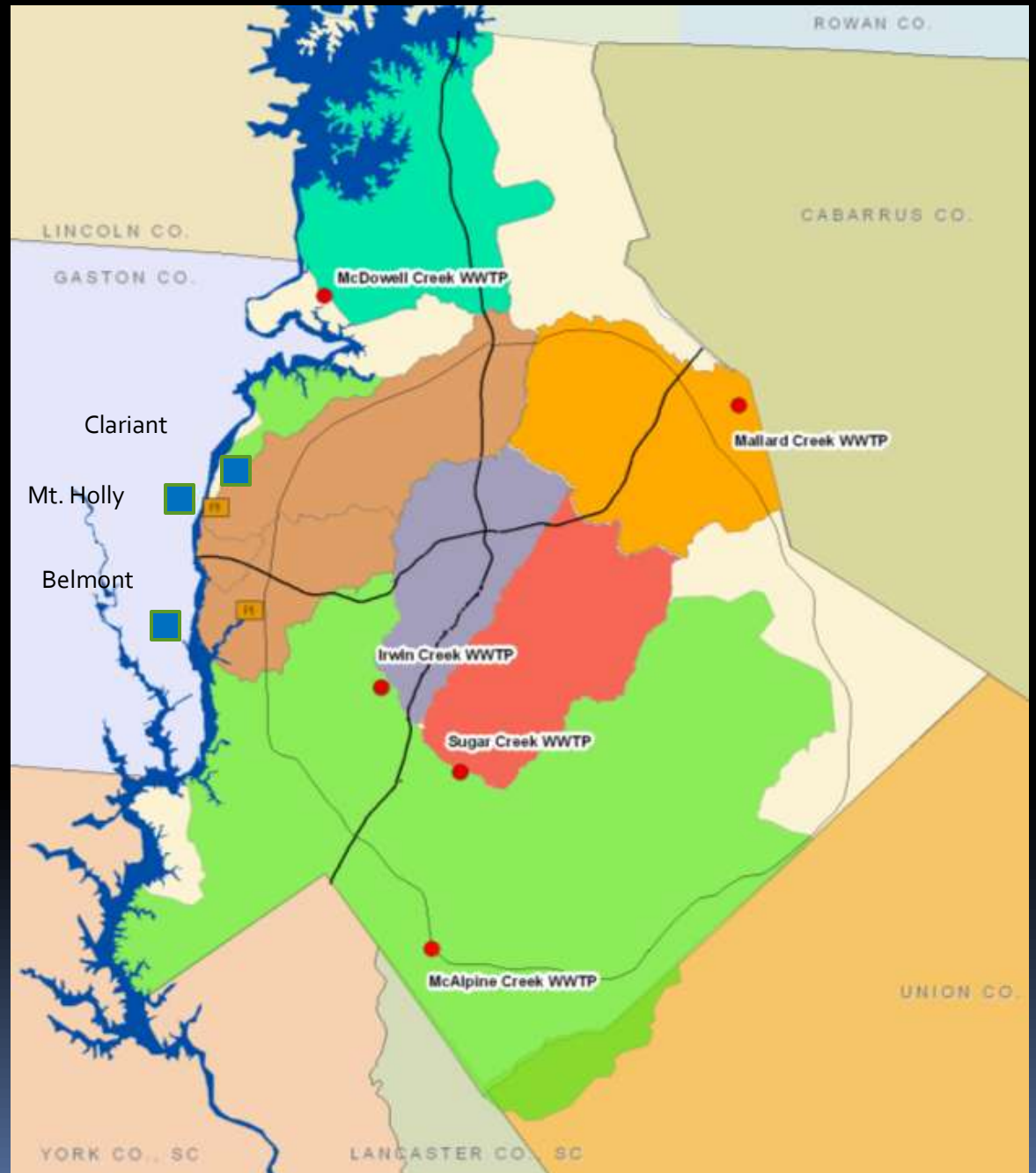
- 225 Miles
- 11 Reservoirs
- Water Supply for >1.5M people

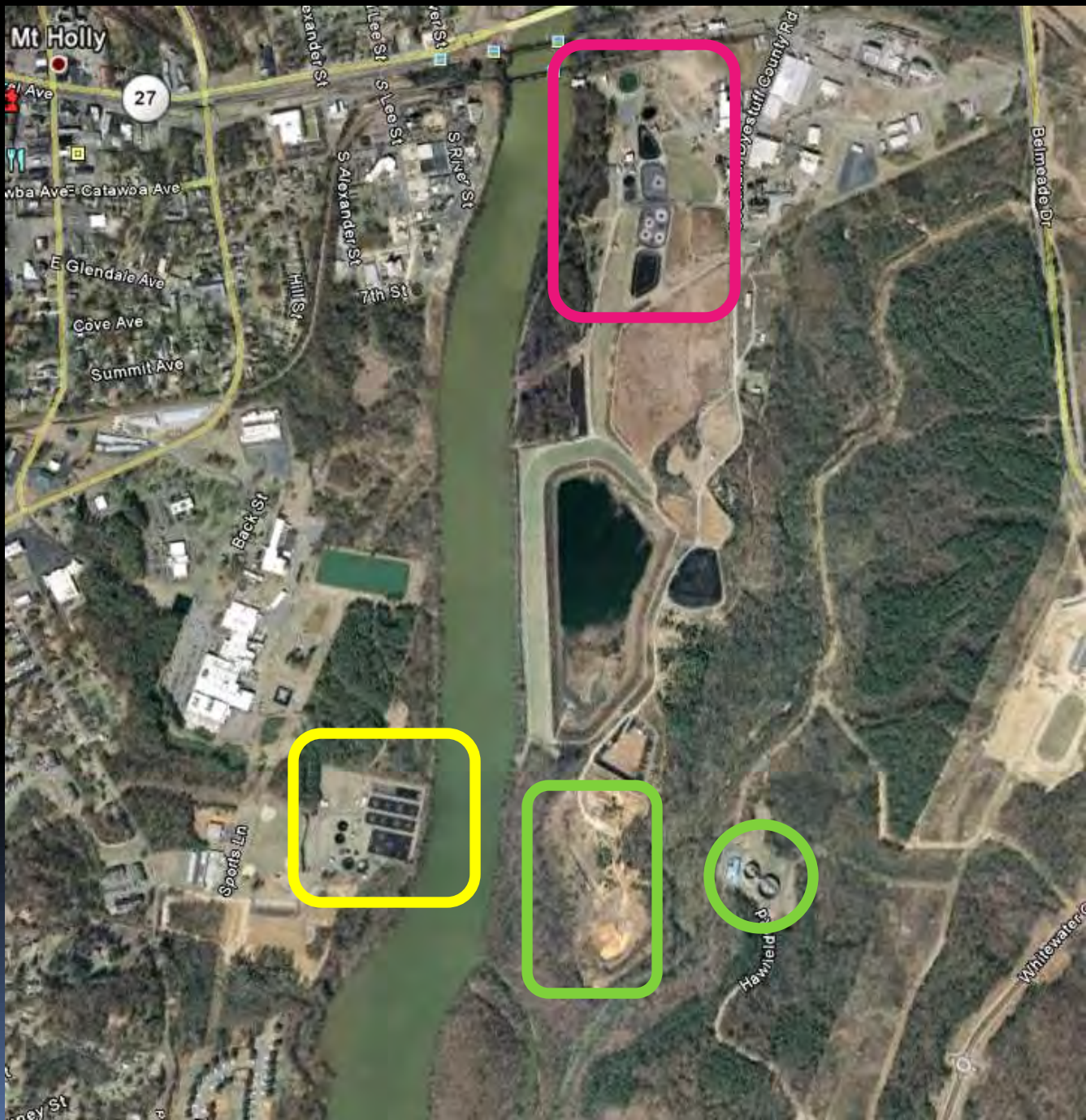


Mecklenburg Wastewater Capacity Study Area



Lake Wylie Wastewater Treatment Plants






ReVenture Park





The TMDL

- Issue: Eutrophication
 - Water Quality Standard: Chlorophyll-a
 - Approved February 5, 1996
 - 6 Pages
- 

TMDL Strategy

- New/Expanding WWTP's > 1 mgd
 - TP limit = 1 mg/l
 - TN limit = 6 mg/l (summer only)
- Industrial Discharges
 - Case by case
 - Reduce TP & TN to Best Available Technology level
 - No specific waste load allocation
- Non-Point Source Reduction

Wasteload Allocation

- Two existing POTW's
- Expansion of both assumed
- Expansion of only one exceeds TP WLA
- Allocations:

Plant / Parameter	Before Expansion Lb/day	After Expansion Lb/day
Mt Holly / TP	110	50
Mt Holly / TN	304	300
Belmont / TP	345	58
Belmont / TN	624	350



Issues

- Changes to NPDES limits for existing plants tied to expansion
- Re-assignment of unused allocations
- Re-assignment of “case-by-case” industrial load
- Future protection of investment in new WWTP



Current Status

- Existing NPDES changes
 - Add TP & TN limits prior to expansion
- Speculative limits for new WWTP
 - Re-assign loading from Mt. Holly
 - Re-assign loading from industry
- Finalizing documentation for EIS



Lessons Learned

- Pay attention to TMDL development
 - Careful with assumptions
 - Consider “what-ifs”
 - Timing is everything for implementation
 - Think long-term
- 